

A wealth of resources to enrich your teaching in primary/intermediate education.

For exhibition information and full programme details visit mtghawkesbay.com/education

Bookings

Book any of the programmes listed here, including our free self-guided experience. We can also tailor a programme to suit your needs. Please contact us now to make a booking:
p (06) 835 7781
e education@mtghawkesbay.com
w mtghawkesbay.com

Prices

Primary/Intermediate (Years 1 – 8)	\$2.50
Accompanying teachers/adults	Free
Self-guided tours – booking essential	Free

Educators

All MTG Hawke's Bay education programmes are delivered by experienced, qualified museum educators.

Travel

Tranzit Coachlines Hawke's Bay bus company offer special rates for schools. Phone Tranzit Coachlines on (06) 877 8133 for bookings.

MTG Hawke's Bay

1 Tennyson Street, Napier
(on the corner of Marine Parade and Tennyson Street)
Open to the public Mon-Sun 9.30am to 5pm
Free entry to exhibitions

Our Enriching Local Curriculum (ELC) service is supported by The Ministry of Education.



Interested in an Educator-Led programme?

If you have an idea of what you need your programme to include, but don't see it in our list of options, simply let us know. We will get back to you as soon as possible with the options available.

Napier Cemetery Walk and Talk

Take a journey of discovery through Hawke's Bay's past with a guided walk through this historic cemetery. You will hear gripping stories of the eventful lives and deaths of local people, touching on missionary work, the New Zealand wars, maritime disasters, the coming of the railways, 19th century burial practices and headstone symbols. This programme is ideal for all schools exploring local history. We also recommend it for schools visiting Napier on school camp.

Years: 3 – 8
Dates: Term 1 and 4
Duration: 1½ hours
Venue: Napier Hill Cemetery
Learning Areas: Social Sciences, Local History, Technology



Hangarau me te Māori: Māori and Technology

Felling a tree to carve a waka. Navigating the seas using the stars. Māori have always been able to apply their skills and knowledge to develop tools in a new environment. How have these tools adapted over time? Why? In this workshop, students will discover a range of early Māori tools before having a go at using a range of old and new technologies. This session will finish with a visit to our Māori gallery - Kuru Taonga.

Years: 5 – 8
Dates: Ongoing
Duration: 1½ hours
Venue: MTG Hawke's Bay
Learning Areas: Social Sciences, Technologies



Out and About on Marine Parade

FREE (Self Guided)

Explore extraordinary changes to Marine Parade over the last 150 years. Who were the Clive flood heroes? How did a 200-year-old cannon end up here? Starting at the museum, collect maps and booklets containing historic images from MTG's archives to guide your groups on their way. Students are given high vis vests and in adult-led groups explore all the interesting monuments, memorials and structures along Marine Parade.

Years: 4 – 8
Dates: Ongoing (weather dependant)
Duration: 1 - 2 hours
Venue: Start at MTG Hawke's Bay, then Marine Parade.
Learning Areas: Social Sciences, Local History



Māori Migration to Aotearoa

Where did Māori come from? How did they travel to Aotearoa? During this session children will learn about early Māori arrival to Aotearoa 700 years ago. During this lesson we will visit the Kuru Taonga exhibition, then return to the classroom for a range of activities. These include making a mini model waka, tying lashings, compass-making and navigating, and satellite bird tracking.

Years: 3 – 6
Dates: Ongoing
Duration: 1½ hours
Venue: MTG Hawke's Bay
Learning Areas: Aotearoa NZ Histories, Science



Hawke's Bay
Tai Ahuriri

Primary/
Intermediate
School
Students

School
Education
Services –
Whāngai
te ākonga
Term 3 & 4
2023

Mārahihau
Artist: Greta Cranswick,
Havelock North Primary School

Quake '31: The day that rocked Thomas' world

Thomas' birthday started well until the solid ground beneath his school began to shake. It was the 3 February 1931 when the Hawke's Bay earthquake struck and the region would never be the same again. Thomas' story is told using an enchanting Kamishibai story theatre box. A visit to the earthquake exhibition follows the story session, where students will see real items from the earthquake, some featured in the story.

Years: 1 – 4
Dates: Ongoing
Duration: 1½ hours
Venue: MTG Hawke's Bay
Learning Areas: Social Sciences, History



Pānia and Moremore

How did Pānia Reef get its name? Hear the local legends of Pānia and view examples of taonga that are spoken about in her story. Learn about Pānia's son, Moremore, and his role as a kaitiaki. As part of this session we will visit the Pānia statue, as well as the Kuru Taonga: Voices of Kahungunu exhibition. The visit concludes with a range of art activities involving Māori design. The Places of Pānia - self-guided walk (free) up Mataruahou available after the programme. Allow 1-1½ hours to find these locations.

Years: 1 – 4
Dates: Ongoing
Duration: 1½ hours
Venue: MTG Hawke's Bay
Learning Areas and Strands: Aotearoa NZ Histories, Art



Historic Heretaunga Hikoi

FREE - Self Guided

Head off on a hikoi around Heretaunga (Hastings) and discover what was there before. When were these buildings built? What was the 'Battle of Hastings'? And what are the names of those sheep?! Starting at Civic Square, students work in groups to follow maps and booklets containing historic images from MTG's archives. Students work in adult-led groups to explore the interesting monuments, memorials and structures around the Hastings CBD.

Years: 4 – 8
Dates: Ongoing
Duration: Spend 1-2 hours
Venue: Start at Civic Square, Hastings
Learning Areas: Social Sciences, Local History



The Great Ahuriri Escape:

Escape your way out of Hawke's Bay's biggest treasure vault by learning stories behind the different names of some of our local landscape features like Bluff Hill, Karetoki Whare, and West Quay. We'll give you a few clues and then it's all about team work and problem-solving. This can be combined with a short tour to locate some of these features or our free self-guided walk, Out and About.

Years: 5 – 8
Dates: Ongoing
Duration: 1½ hours
Venue: MTG Hawke's Bay
Learning Areas: Social Studies, Aotearoa Histories-Place and Environment, Mātauranga Māori, Local Histories

Marineland: Ring of Fire

Marineland of the 1960s was a big entertainment hit with families from around ngā motu. Dolphins and sea-lions performed tricks galore to delighted audiences for decades. Over the years, attitudes changed to animal welfare and using animals as entertainment. Marineland adapted and took the role as a sanctuary for healing sick marine mammals, but was closed in 2008. Tamariki will explore the Marineland exhibition and consider how and why people's attitudes changed over time. We will discuss how students can undertake kaitiakitanga by considering current animal welfare issues in their communities. The session concludes with students participating in the creation of a collaborative art work.

Years: 3 – 6
Dates: To March 2024
Duration: 1½ hours
Venue: MTG Hawke's Bay
Learning Areas: Social Sciences



Quake '31: Breaking News!

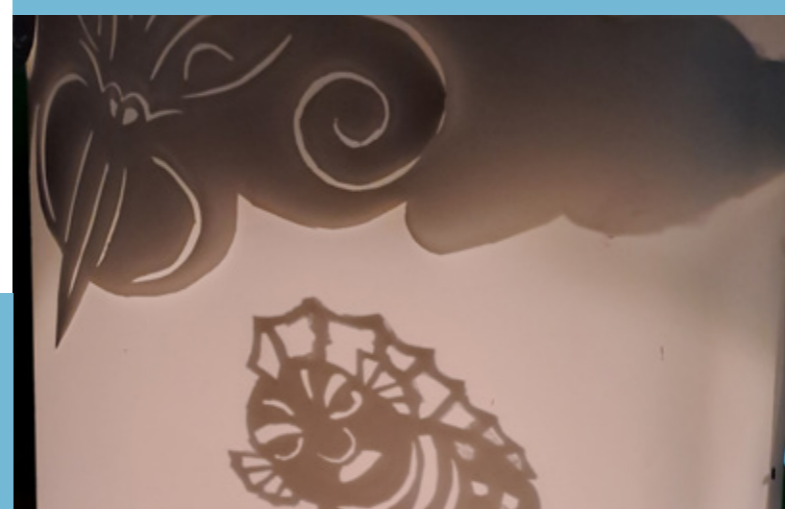
Travel back in time to arrive in Hawke's Bay moments before the 1931 earthquake. Team up to report live from the scene as the disaster unfolds. Using green screen technology and drawing on images and stories in the museum's earthquake exhibition and archives, students research details of what happened on the day and collaborate creatively to record eye witness accounts that can be edited into a full TV news report.

Years: 5 – 8
Dates: Ongoing
Duration: 2 hours
Venue: MTG Hawke's Bay
Learning Areas: Social Sciences, History, Digital Technology

Matariki

In this programme tamariki are invited to come and experience the magic of Matariki as the Education Suite is transformed into a Whare Tapere. Ākonga will watch a shadow puppet show and listen to the pūrākau (available in Te Reo Māori and/or English) about Matariki. They will participate in a range of ngā tākaro (games) and visit to our Waka Korero, and Fiona Pardington's Taku Huia Kaimanawa exhibition for a treasure hunt and to gather more ideas about the constellations.

Years: ECE to 6
Dates: Limited dates - Term 2 and 3
Duration: 1½ hours
Venue: MTG Hawke's Bay
Learning Areas: Aotearoa NZ Histories



Battles in the Bay: Part two: Conflict at Ōmarunui

This programme looks at the arrival of Pākeha into Te Matau a Māui and considers the implications of Te Tiriti across Aotearoa. We look at the relationship between local rangitira and settler militia during the Hauhau conflicts in Pētane and Ōmarunui. Students will visit the Kuru Taonga gallery to learn the stories of some of the key rangitira at the time, and return to the classroom to design and create peace flags. Battles in the Bay: Part one: The Musket Wars programme available.

Years: 7 – 8
Dates: Ongoing
Duration: 1½ hours
Venue: MTG Hawke's Bay
Learning Areas: Aotearoa NZ Histories